

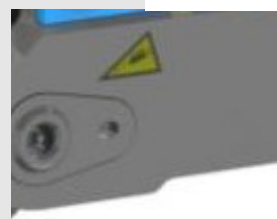
The hoods with weld-on hooks

The hoods are screwed to the frame with bolts. A bolted weld on hook is mounted as standard on each hood. Because the hooks are bolted, they are easy to replace if necessary.



Locking devices

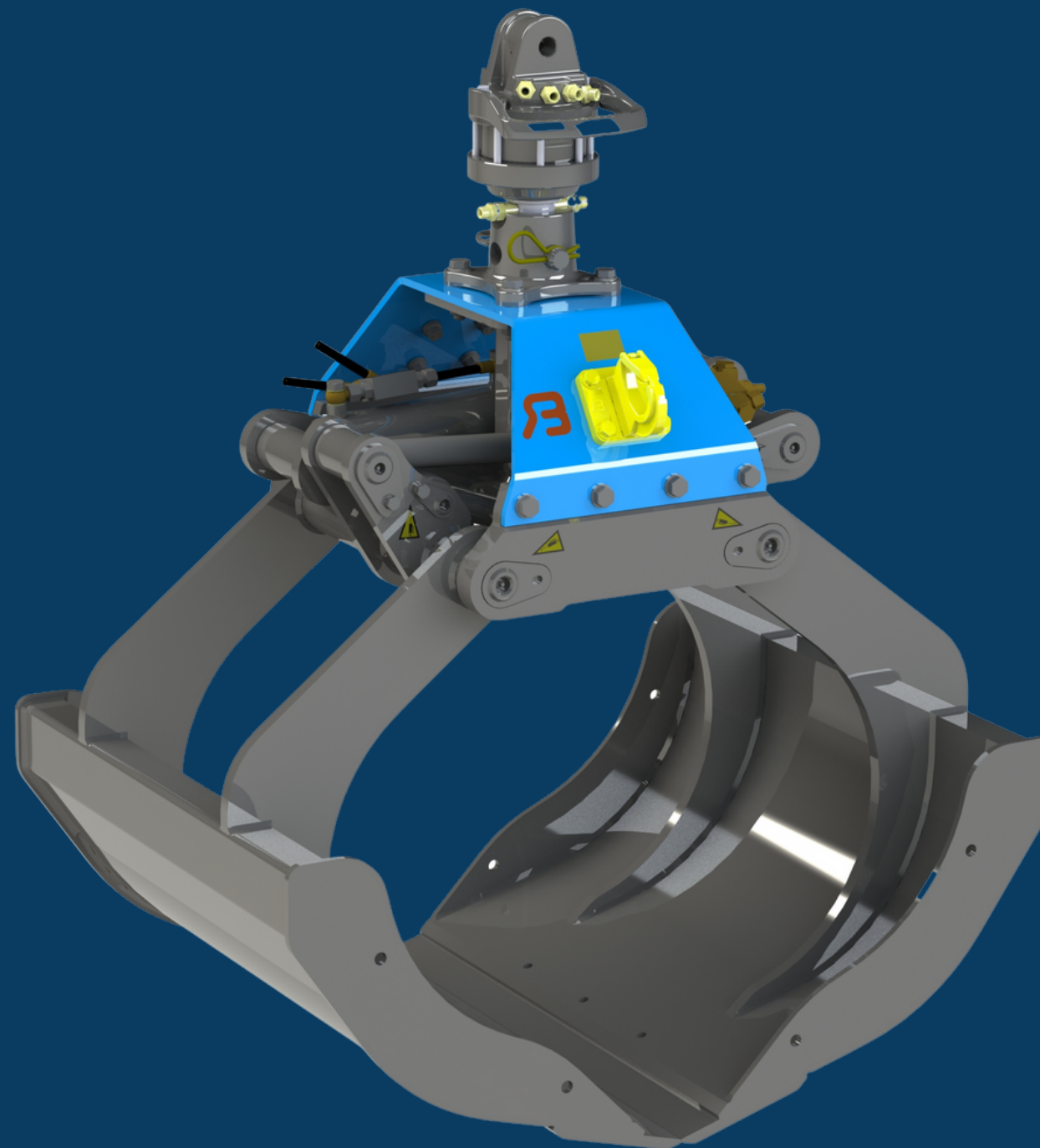
The main pins are secured by the locking devices on one side being sunk into the bridge piece plate and the nuts on the other side being secured with a locking plate.



| Type | Width | Capacity | Weight | Working pressure | Force |
|---------|--------|----------|--------|------------------|-------|
| BDV 65 | 67 cm | 300 L | 340 Kg | 200 Bar | 30 Kn |
| BDV 80 | 82 cm | 400 L | 385 Kg | 200 Bar | 30 Kn |
| BDV 90 | 92 cm | 450 L | 415 Kg | 200 Bar | 30 Kn |
| BDV 100 | 102 cm | 500 L | 445 Kg | 200 Bar | 30 Kn |
| BDV 120 | 122 cm | 600 L | 505 Kg | 200 Bar | 30 Kn |

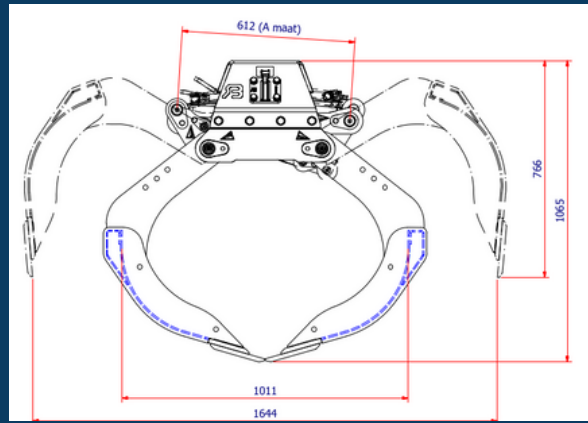
BDV

Multi-purpose grab



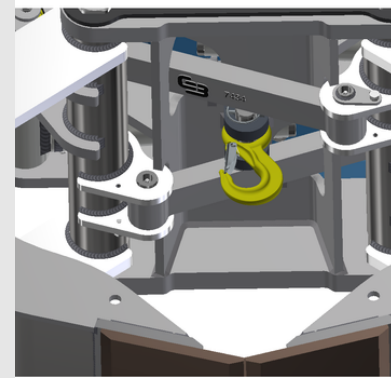
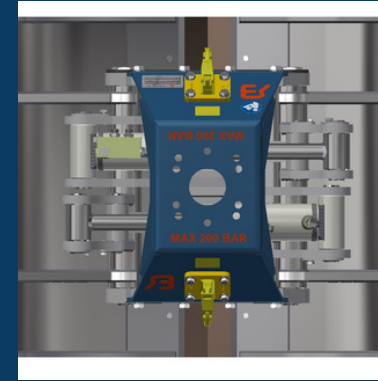
Grip opening

The BDV has a large grip opening that can also be used to pick up road plates up to a width of 1500 mm.



The hole pattern

The frame is equipped with the hole pattern for a flange rotator with 4 holes.



The extra lifting hook

An extra lifting hook is available as an option, which can be mounted in the middle under the bridge piece. The BDV therefore offers a lot of versatility.

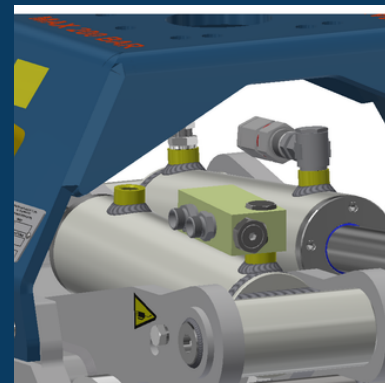
The interchangeable blades

The BDV is equipped as standard with wear-resistant interchangeable blades that are bolted to the shells. When the blades are worn, they can be unscrewed and turned over to use the other worn side.



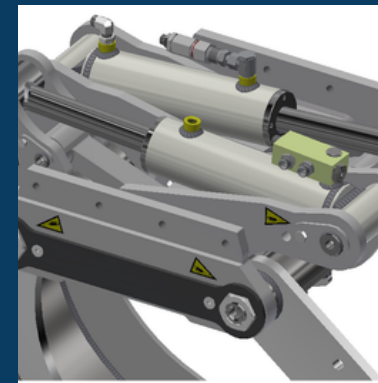
Non-return valve

Due to a malfunction in the hydraulic system of the crane, the pressure in the cylinder can drop. To prevent the load from falling out of the grab in such situations, it is equipped with a non-return valve as standard.



Two cylinders

The grab owes its strength to the two cylinders, which not only provide additional power but also ensure extra stability.



Accessories

For loading and unloading gravel, grit, etc., separate side plates are available as an option, which turns the BDV into a closed grab.

It is also possible to install a set of driving plate segments. This turns your BDV into a driving plate clamp that can easily pick up road plates with a width of up to 2000 mm.

