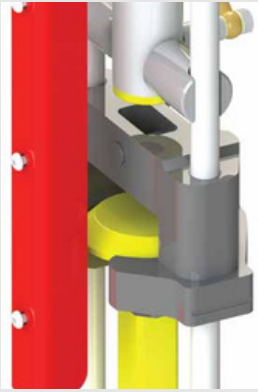
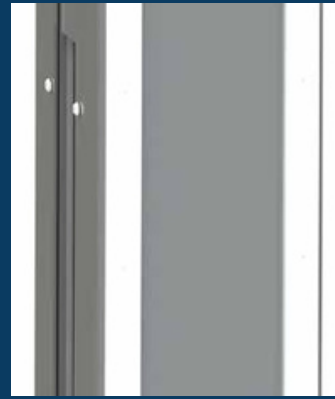


Rubbing strip

Plastic strips have been applied to the outside. This allows the GEJO 01 BM to be laid flat during transport without causing damage to the structure of your car .

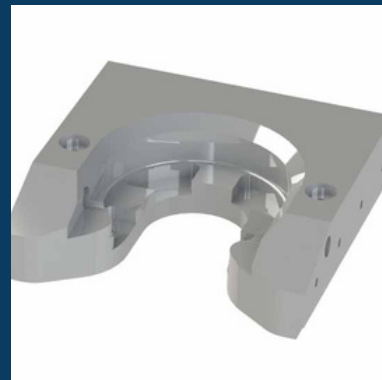


Extra safety

A profile has been fitted on the inside of the GEJO 01BM, which protects the top disc of the system against failure.

Mushroom system

The Gejo 01 BM is a unique device for emptying environmental containers with a mushroom system. The mounting plate for the mushroom is made from one piece.



Type	Weight	Capacity	Working pressure
GEJO 01 BM	160 Kg	5000 Kg	200 bar

GEJO 01 BM

Container emptying system



Strong cylinder

The GEJO 01 BM is equipped with a very strong telescopic cylinder, giving the GEJO 01 BM a lifting capacity of 5000 Kg. The highest capacity for this type of system in the market.



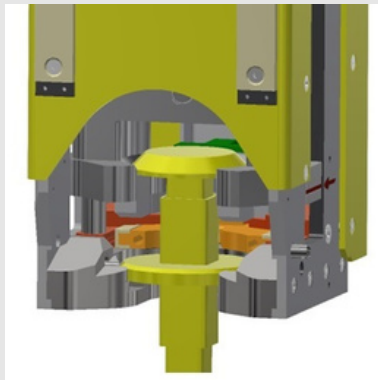
Safety

The design of the GEJO 01 BM took into account the safety standards that currently apply. The GEJO 01 BM is equipped as standard with a controlled non-return valve so that the bottom of the container cannot open without the driver giving a signal.



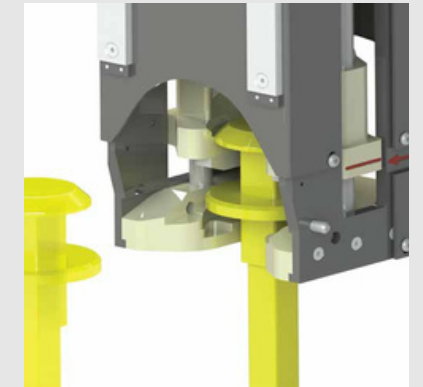
Failure protection

The moment the container is lifted the failure protection of the Gejo 01 BM comes into effect. This provides extra protection against the container falling out of the Gejo 01 BM.



Connecting

To connect the container, the mushroom system is approached from the side. Because you see what is happening, this ensures even more safety. Once the mushroom system has been correctly placed in the Gejo 01 BM, the cylinder can be retracted to keep the container closed.



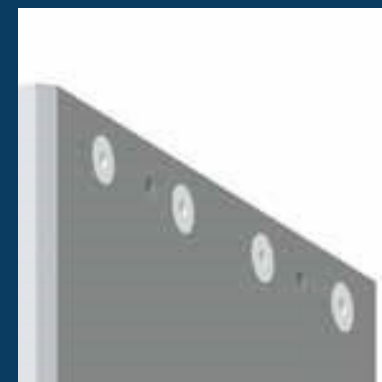
Additional lifting hook

As an option, it is possible to equip the Gejo 01 BM with a lifting hook with which other objects can also be lifted. The Gejo 01 BM is equipped as standard with a pin to block this hook against loosening.



Easy to maintain

Because the Gejo 01 BM is easy to disassemble, you can carry out any necessary maintenance without much effort.



Low costs

The Gejo 01 BM has low maintenance costs due to its simple and robust construction, with few moving parts.

