

# ROTAQ

Quick coupling system



## Changing quick

Changing attachments on your truck crane only takes seconds instead of minutes with the RotaQ.



## Widely applicable

The RotaQ can be used on all truck cranes that regularly change equipment. Think of container emptying systems, load hooks, multi purpose grabs, pallet hooks, etc.



## Changing safe

To change attachments on the truck crane, you no longer have to leave the place from which you operate the crane. This makes dangerous climbing and assembly work a thing of the past.

## One RotaQ, endless possibilities.

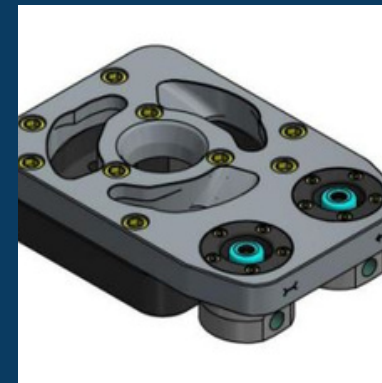
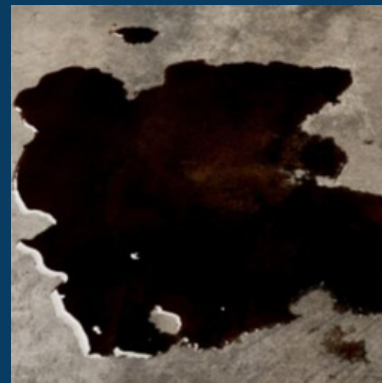
Using a RotaQ you can mount many different pieces of equipment to a crane. You only need to install a RotaQ hydraulic base plate per piece of equipment.

The RotaQ is available in various versions with a lifting capacity of up to 10 tons



## Changing environmentally conscious

When changing equipment, you no longer have to worry about oil leaks with the RotaQ. Environmentally an absolute advantage in connection with the increasingly strict environmental requirements.



## Compact construction

With the hydraulic base plate, the height increases by only a few centimeters

## Cost-saving

Because the RotaQ works quickly, you save time. But more importantly, it reduces the risk of accidents when changing to an absolute minimum.

