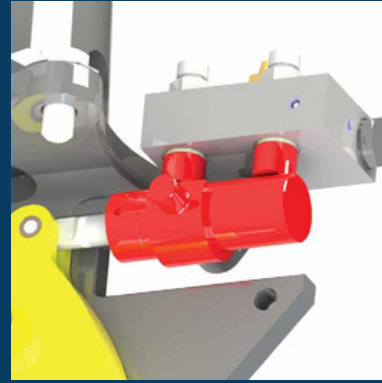


Double-acting cylinder

The double-acting cylinder of the LHH 4500 ensures that this small powerhouse is as compact as possible.



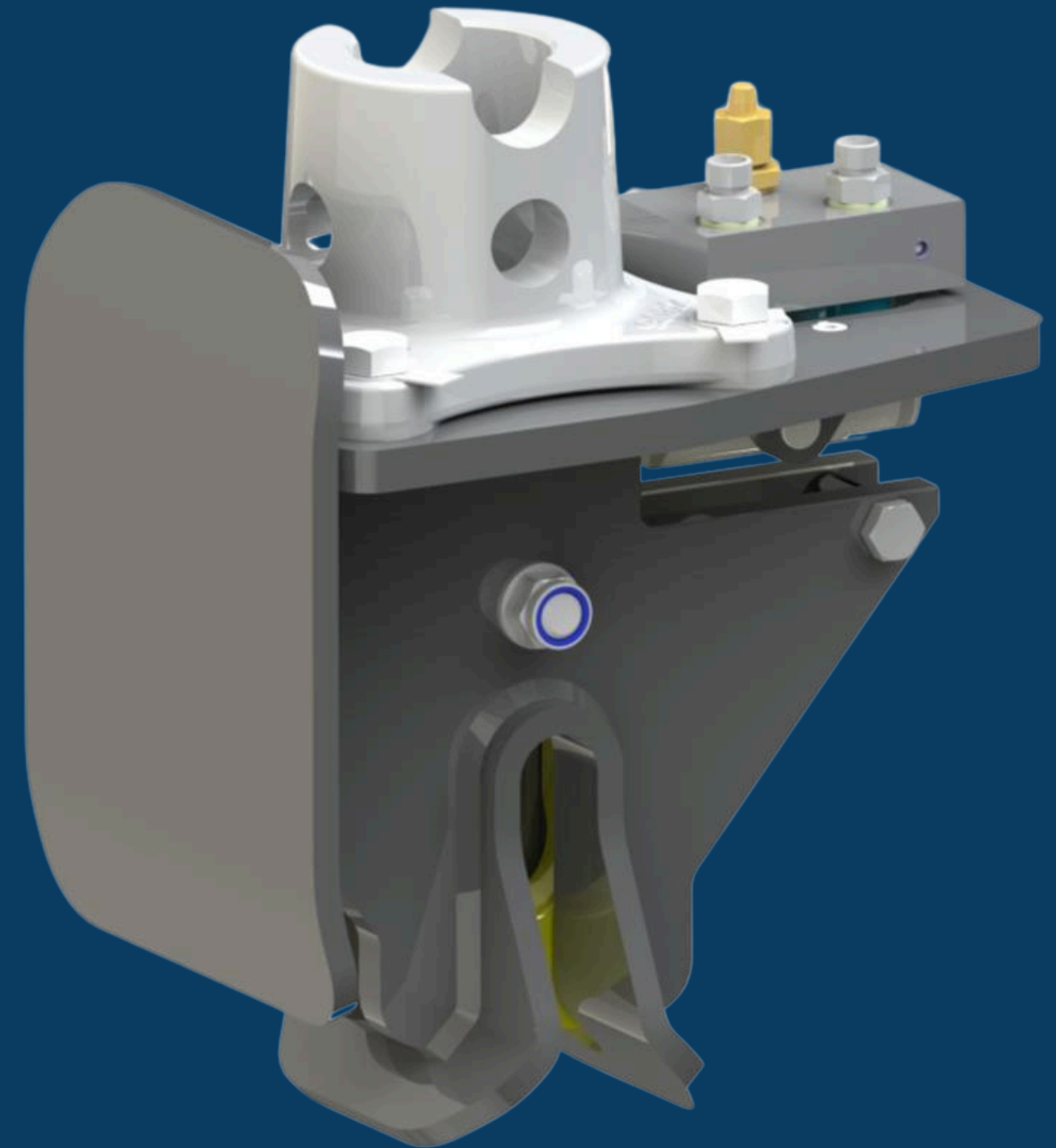
LHH 4500

Container emptying system



Valve and cylinder protection

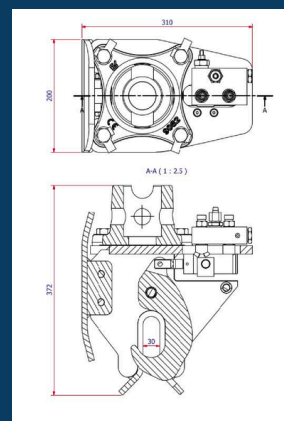
The LHH 4500 is designed in such a way that the cylinder and the valve are optimally protected. The sloping construction ensures that any outside collisions are diverted along the LHH 4500.



Type	Maximum lifting load kg	Weight kg	Working pressure bar	Maximum oil flow L/Min
LHH-4500 BR	4500	20	50	15
LHH-4500 BS	4500	20	50	15
LHH-4500 F BR	4500	20	50	15
LHH-4500 F BS	4500	20	50	15

Small and powerful

With a width of only 310 mm and a height of 372 mm, the LHH is the smallest of our container emptying systems. But don't underestimate its power. As small as it is, it is capable of lifting a formidable 4500 kg.



The connection to the rotator.

The LHH is equipped with a connection plate. A flange rotator can be mounted on this or, if desired, an adapter plate for a shaft rotator.



The extra hook

The LHH-4500 can optionally be equipped with an extra hook. (type LHH-4500 F)



The different versions

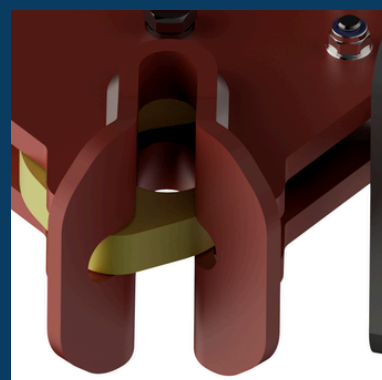
The LHH-4500 is available in four versions.

The LHH-4500 BR with a stainless steel duckbill liner, the LHH-4500 BS with a steel duckbill liner, the LHH-4500 F BR with stainless steel duckbill liner and an additional hook and the LHH-4500 F BS with a steel duckbill liner and an additional hook.



The duckbill

Thanks to the duckbill around the hook, "picking" becomes a simple job. Thanks to this duckbill, the LHH 4500 helps the operator find the correct position of the hook and adjusts to achieve the perfect position in relation to the container's mounting bracket.



The check valve

Safety is the basis for all our designs. This is also the case with the LHH-4500. This hydraulic hook is supplied as standard with a check valve to prevent the hook from releasing its load when the pressure from the crane drops.



Simple design, low maintenance

Due to its simple design, the LHH requires little maintenance. An annual inspection is sufficient. This inspection can take place during the annual lifting certification of your LHH 4500

