

## The hood with weld- on hooks

Two weld-on hooks are mounted on the hood as standard. Because the hooks are bolted, they are easy to replace if necessary.



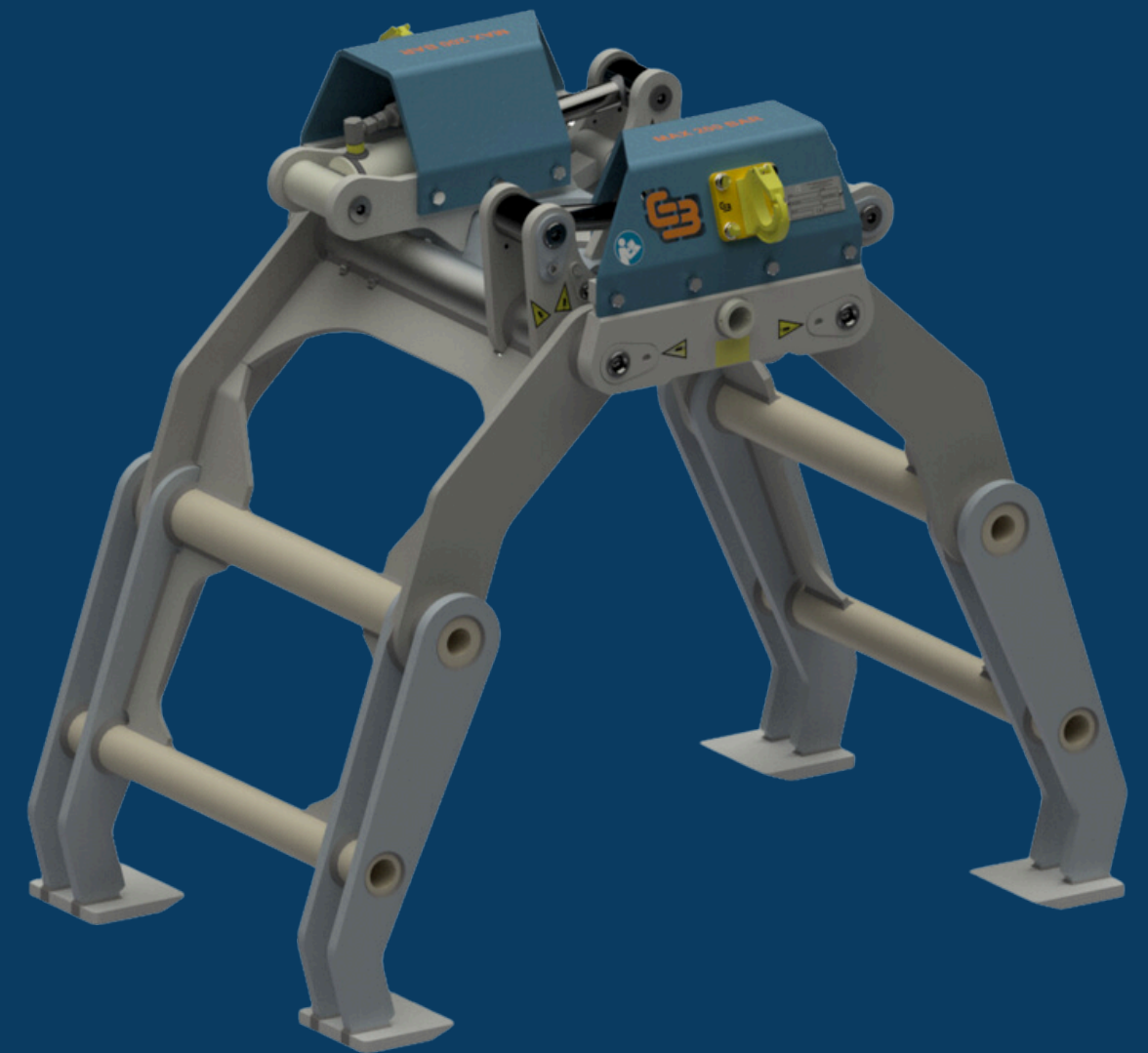
# RBRPEZ 200

## Roadplate clamp



## Safeguards

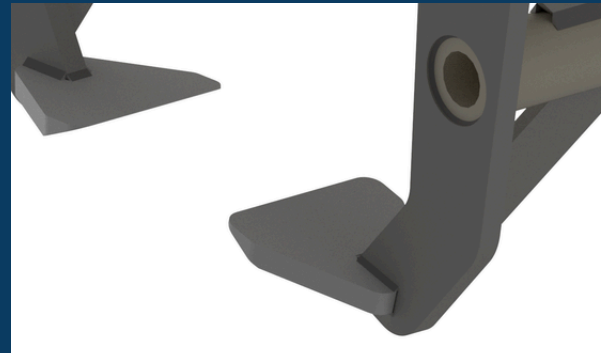
The main pins are secured by recessing the bolts into the bridge piece plate on one side and the nuts on the other side are secured with a locking key. This key is also suitable for loosening/tightening the nuts of the cylinder.



Type	Width	Maximum working pressure	Maximale gripping width	Weight
RBRPEZ 200	1000 mm	250 Bar	2120 mm	485 Kg

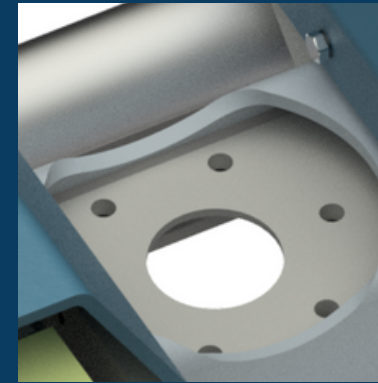
## The feet

Discover the unparalleled durability of RBRPEZ's feet, made from high-quality Hardox 400 steel. These strong and durable feet guarantee long-lasting performance, even under the toughest conditions.



## The hole pattern

The bridge piece is designed with hole patterns for both 4- and 6-hole flange rotators and features a central large hole for hose connections from below.



## The dual steady links

Experience the power and stability of the RBRPEZ thanks to the dual steady links, designed for optimal performance and reliability, even in demanding environments.



## The arms

Part of the safety of the RBRPEZ lies in the strength of this clamp. To make the clamp so strong, the arms are made of S 355, a high-quality steel. This ensures that the RBRPEZ can withstand very high forces.



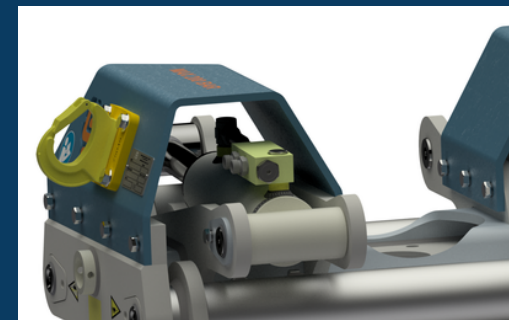
## Check valve

The RBRPEZ is equipped with a check valve as standard to prevent a failure in the hydraulic system of the crane from losing pressure in the cylinder and causing the clamp to release its load.



## The Cylinders

Experience the robustness of the RBRPEZ with its double cylinders. Thanks to these double cylinders, there is room to mount the rotator lower. This also makes the RBRPEZ extra strong.



## The double hood

Thanks to the double hood of the saddle plate, the RBRPEZ can be mounted on various "Z crane" models. The RBRPEZ can also remain mounted in the folded position of the crane.

