



GRAB IT

Forklift Attachment

18/07/2024





GRAB IT

When your forklift becomes a loader...

Minimum forklift requirements:

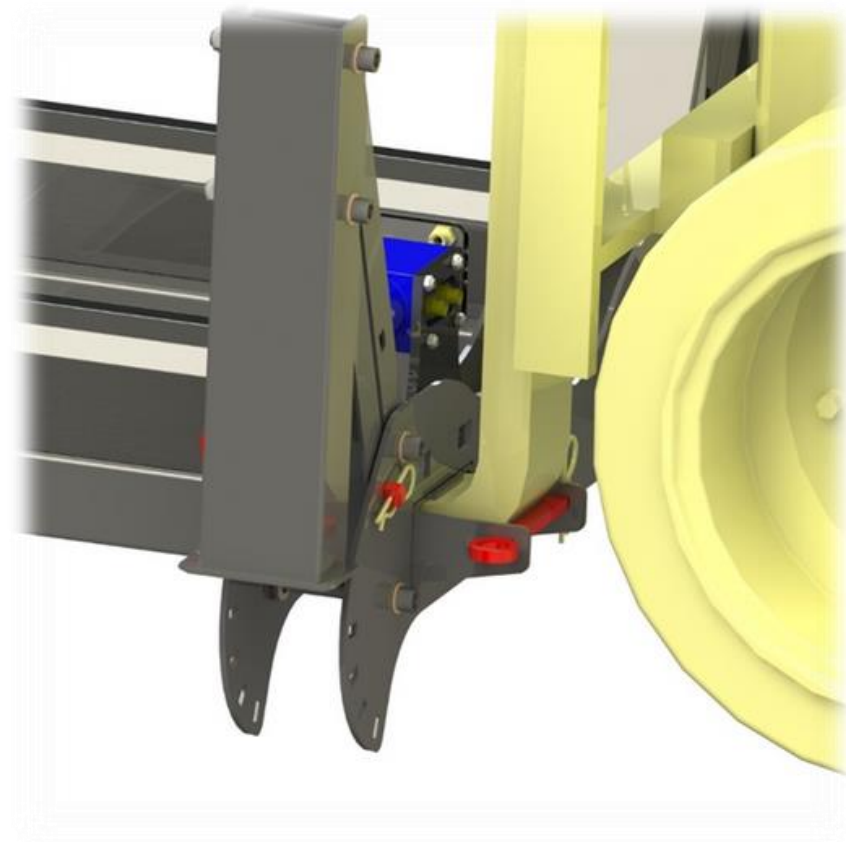
1. 4 wheels
2. Minimum 2 ton lifting capacity
3. One extra oil channel available
4. Forks length not less than 1200mm
5. Forks section: Max width 150mm, Max thickness 60mm
6. Minimum distance between the forks 430mm



GRAB IT



A “Plug and Play” forklift accessory.

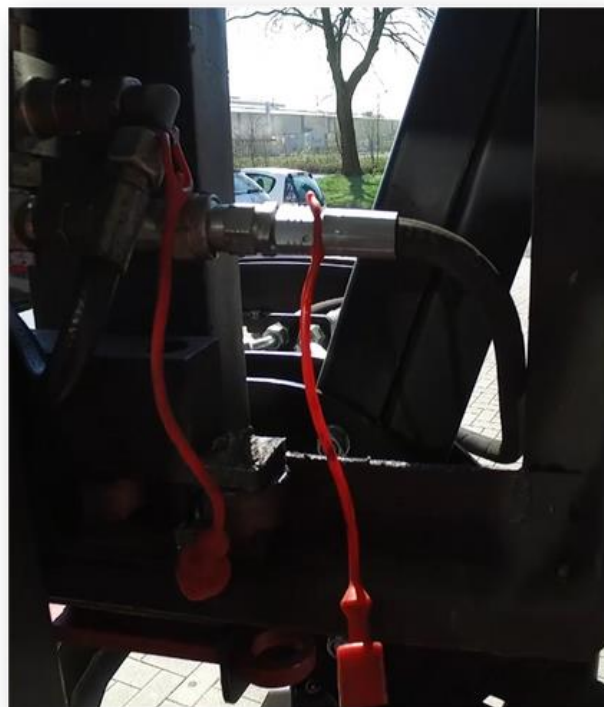


GRAB IT



The system uses the oil flow coming from the forklift's extra oil channel (or channels).

The hydraulic connections are by hydraulic quick couplings



GRAB IT

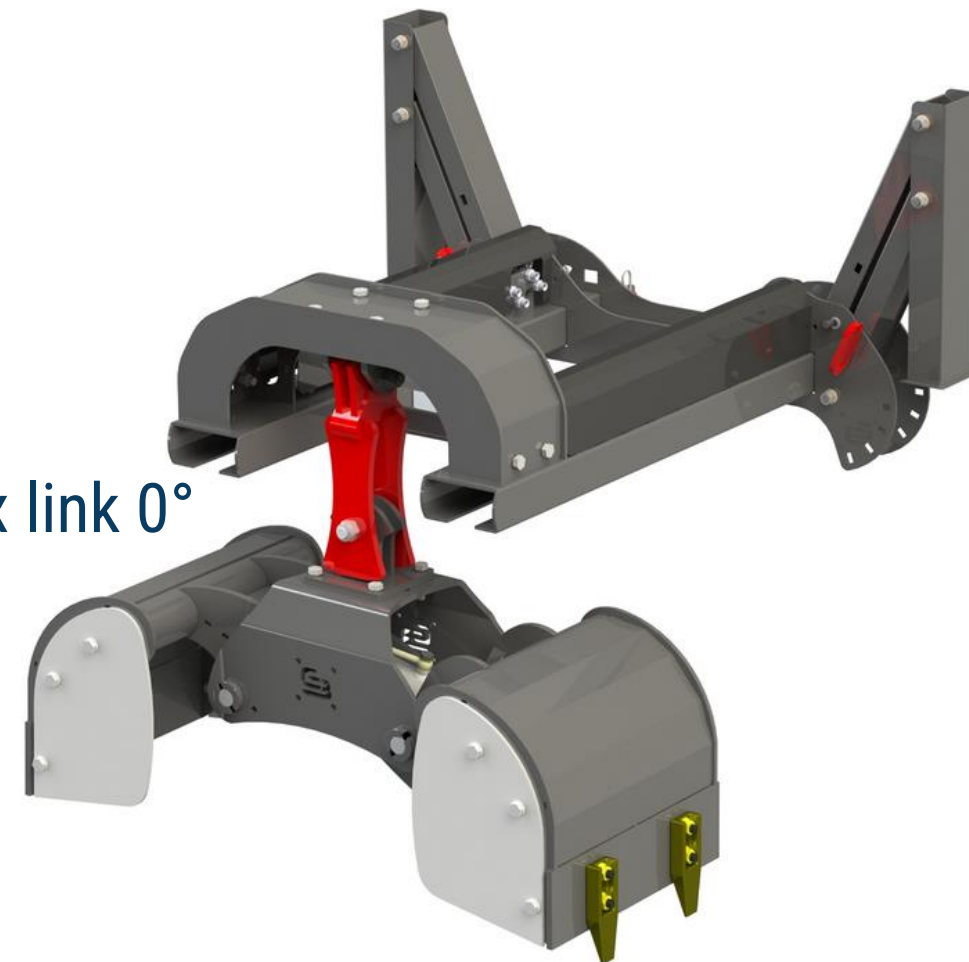


It can be equipped with several kind of tool/attachments, with or without rotators

Hydraulic Rotator
360°



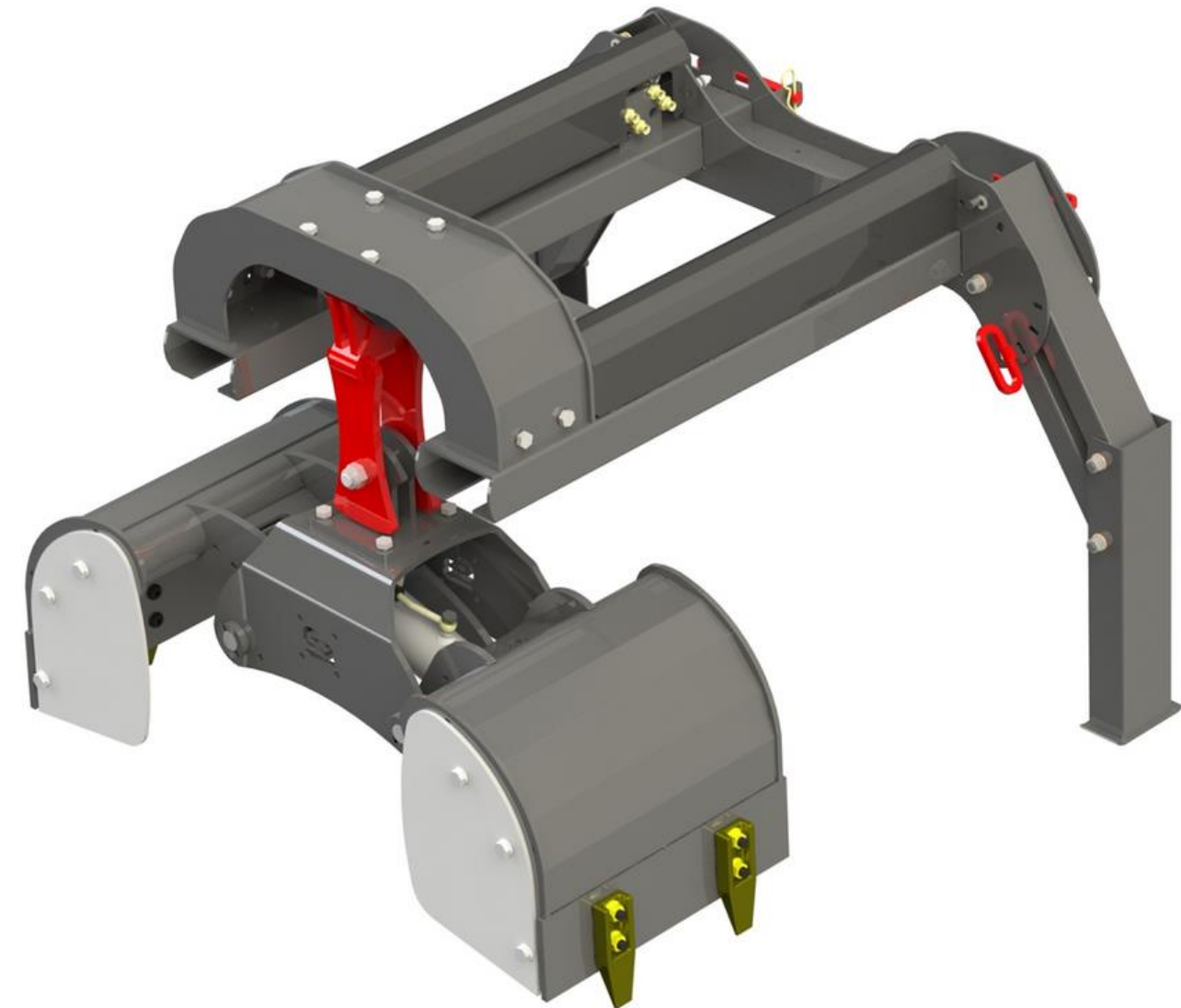
Fix link 0°



GRAB IT



Once not used , it can be parked using the retractile legs

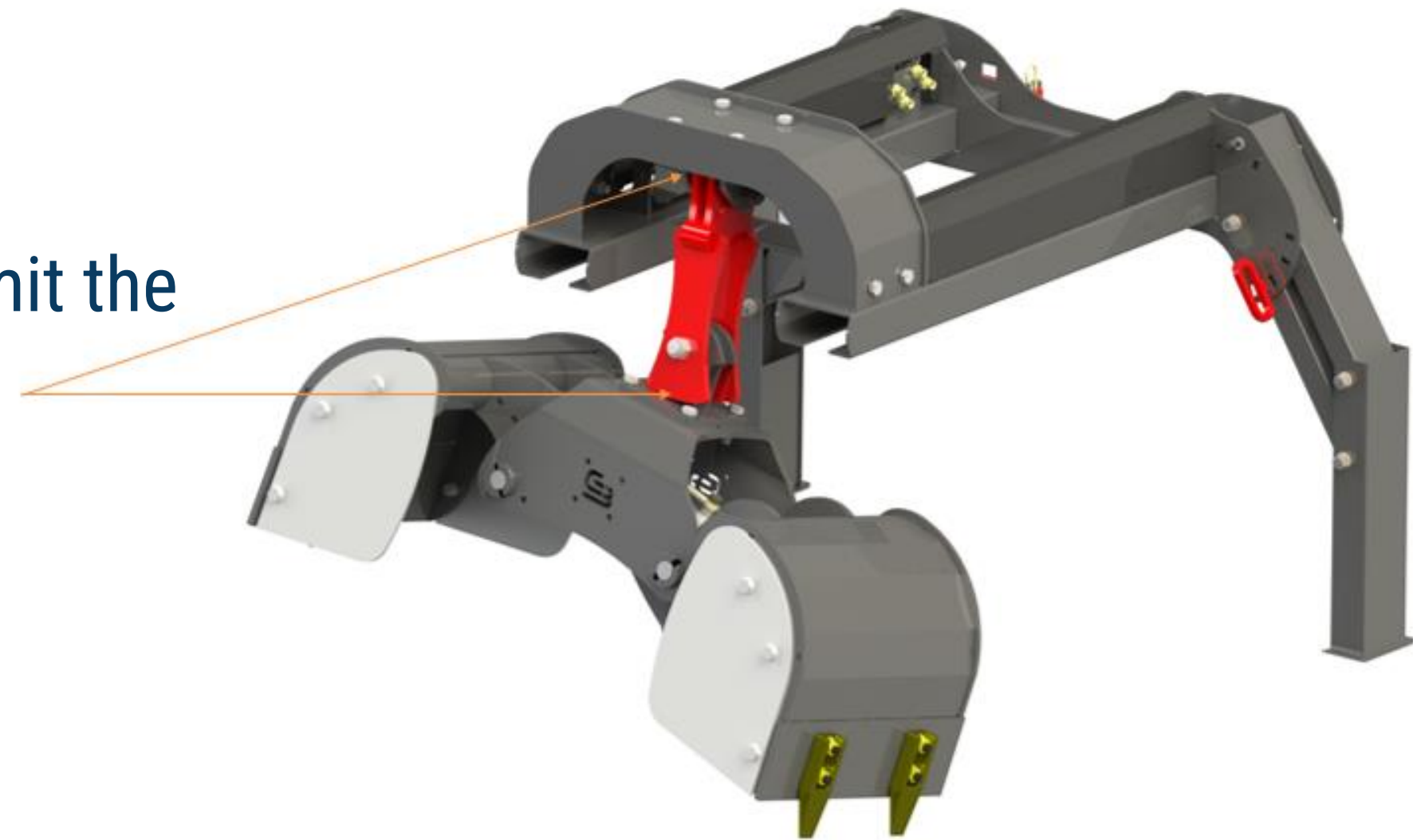


GRAB IT



Limited swings of the attachments, to prevent movement of suspended mass

Stopper designed to limit the swinging strokes



GRAB IT



Key Features:

- **Versatile Handling:** Capable of managing diverse materials including loose items and irregularly shaped objects.
- **Enhanced Efficiency:** Streamlines operations by expanding the forklift's range of functions.
- **Robust Construction:** Built to withstand rigorous use in demanding environments.

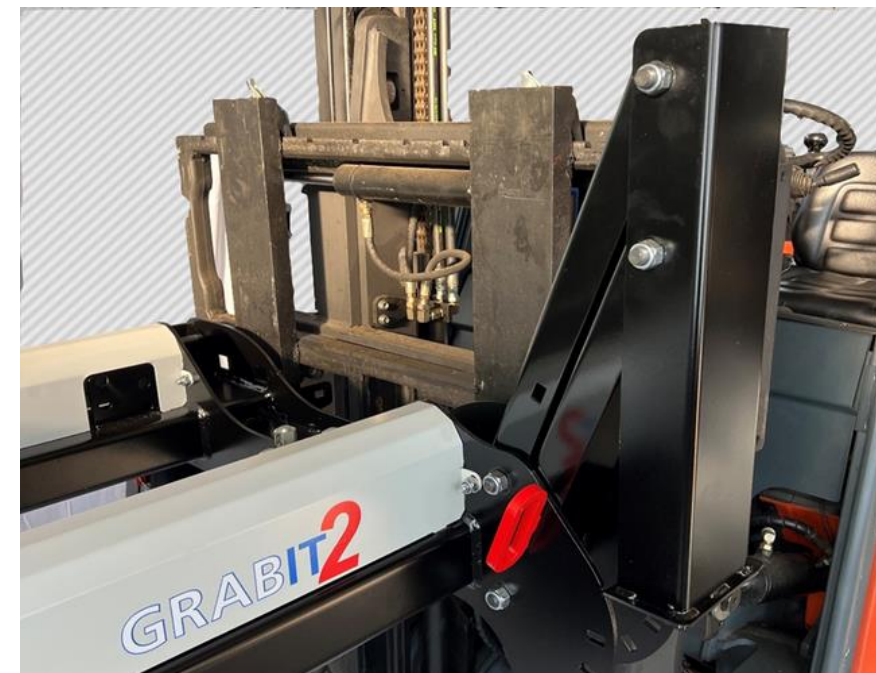


GRAB IT



Applications:

- **Waste Management:** Efficiently handle and transport waste materials, improving site cleanliness and operational efficiency.
- **Scrap Metal Processing:** Streamline the collection and processing of scrap metal, enhancing safety and productivity.
- **Construction Sites:** Ideal for moving construction materials of varying shapes and sizes, optimizing site logistics.
- **Agricultural Operations:** Facilitate the handling of crops, feed, and equipment, promoting smoother agricultural processes.



GRAB IT



Conclusion:

By integrating Grab-It Systems, businesses can transform their forklift operations, achieving greater efficiency and versatility.

These systems are a game-changer for industries requiring reliable and adaptable material handling solutions.





Competitive Advantages

Advantages



HIGHEST QUALITY & COMPETITIVE ATTACHMENTS



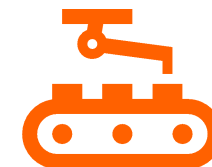
We offer the **safest** “in-house” engineered & manufactured, high quality attachments on the market.



We benefit the **best quality/price ratios** due to well negotiated frame agreements and consider our suppliers as partners.



We ensure **easy (online) access** to technical product data, manuals and drawings.



We manufactures over **2000 attachments** per year.

RESULT

Our products are engineered to **the best, last the longest, reduce operational cost** and are still **extremely affordable**

Benefits



LARGE NETWORK

Owned Sales & Service locations
across Europe and United States

Strategic spare parts centers in
The Netherlands, Italy and USA

Growing network of dedicated sales and
service partners in EMEA and Americas region



PERSONALIZED ON-SITE TECHNICAL CONSULTING

Hands-on, technical team, including management

We get our hands dirty, figure things
out and solve challenges with you

Strong proximity and assistance to, the loader
crane & excavator manufacturers , as well as
machine operators is our first motivation



Contact



Contact

GUSELLA-BAKKER Sales BV

Nijverheidsweg 6
6662 NG Elst (GLD), The
Netherlands

T. +31 481 374757

E. info@gusella-bakker.com

W. www.gusella-bakker.com





GUSELLA
BAKKER