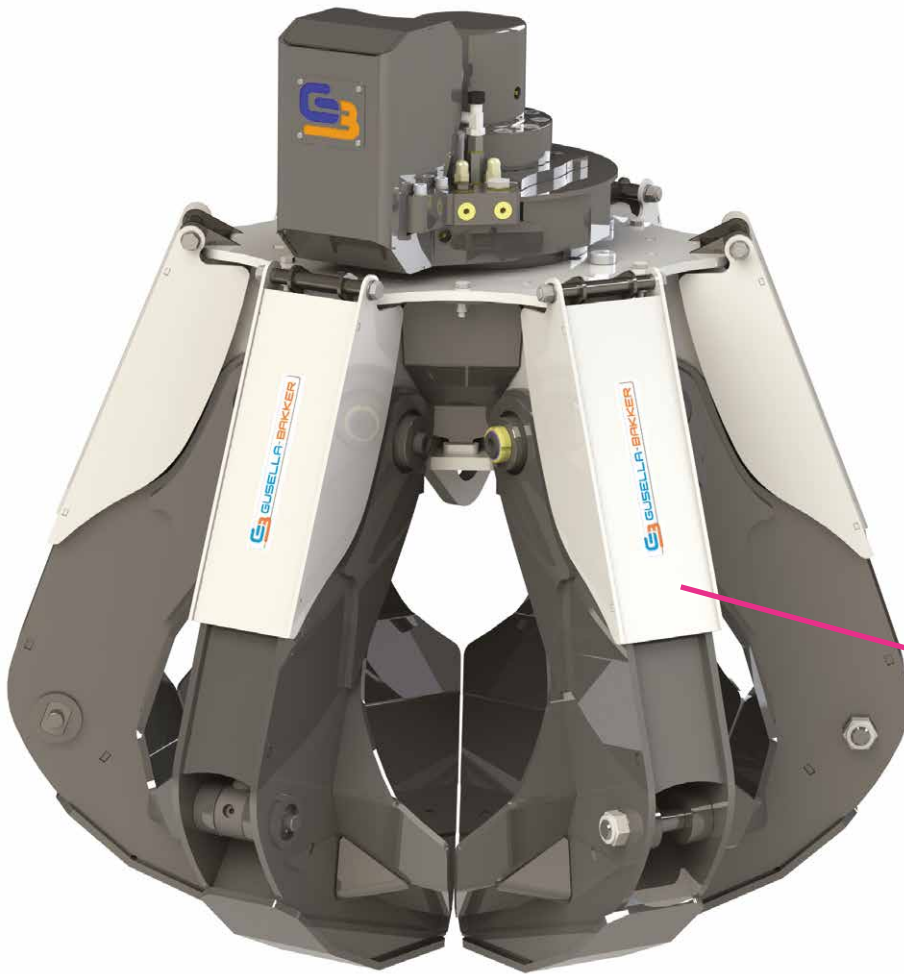


SHE



Ton. 11,0 - 25,0

SCRAP
ROTTAME
RUBBLE
MACERIE
WASTE MATERIAL
RIFIUTI



Optional cylinder covers
Protezioni cilindri opzionali



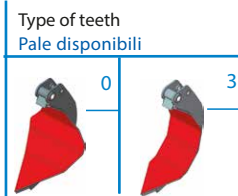
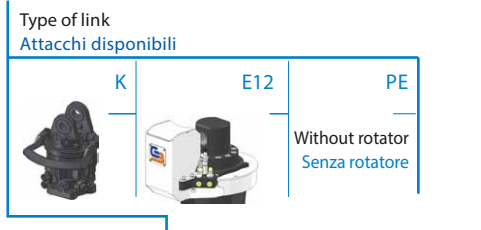
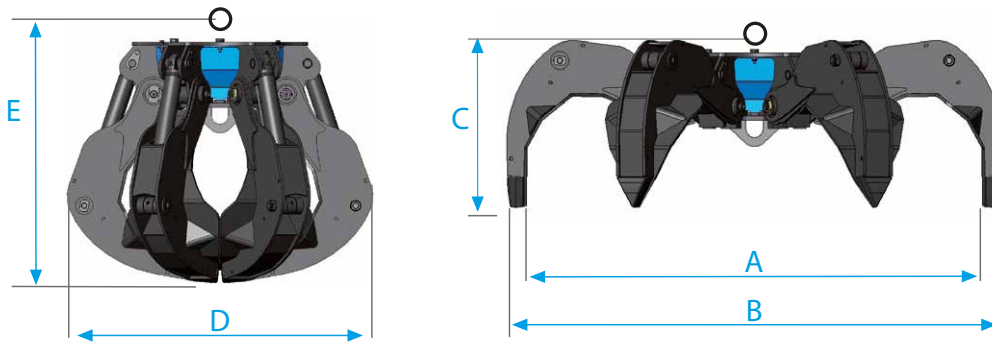
Due to special thermic treatment and the use of high abrasion resistant steel the tips of teeth feature an exceptional hardness.
Le punte sono stampate a caldo in acciaio antiusura.
Grazie ad uno speciale trattamento termico raggiungono un'elevatissima durezza.



Hydraulic components are very well protected from impact and penetration of material. (optional)
Robusti carter (optional) proteggono i componenti idraulici da colpi e da intrusioni di materiali.



Reduced height due to special GRI Swivel ring rotator.
Altezza ridotta grazie allo speciale rotatore a ralla GRI.



| Model Modello | Link type Tipo attacco | Teeth available Pale disponibili | | Capacity Capacità Lt. | Weight Peso Kg. | Load Portata Ton. | Pressure Pressione Max Bar | Teeth Pale N. | Ton. | Dimensions Dimensioni | | | | |
|------------------|---------------------------|-------------------------------------|---------|-----------------------------|-----------------------|-------------------------|----------------------------------|---------------------|-------|--------------------------|------|------|------|------|
| | | Standard | Special | | | | | | | A | B | C | D | E |
| SHE 355 | PE | 0 | 3 | 350 | 674 | 3,5 | 360 | 5 | 11-16 | 1820 | 2020 | 745 | 1395 | 995 |
| SHE 355 | K (16 ton) | 0 | 3 | 350 | 769 | 3,5 | 360 | 5 | 11-16 | 1820 | 2020 | 958 | 1395 | 1235 |
| SHE 355 | E12 (GRI12) | 0 | 3 | 350 | 920 | 3,5 | 360 | 5 | 11-16 | 1820 | 2020 | 1030 | 1395 | 1280 |
| SHE 356 | PE | 0 | 3 | 350 | 754 | 3,5 | 360 | 6 | 11-16 | 1820 | 2020 | 745 | 1395 | 995 |
| SHE 356 | K (16 ton) | 0 | 3 | 350 | 849 | 3,5 | 360 | 6 | 11-16 | 1820 | 2020 | 985 | 1395 | 1235 |
| SHE 356 | E12 (GRI12) | 0 | 3 | 350 | 1030 | 3,5 | 360 | 6 | 11-16 | 1820 | 2020 | 1030 | 1395 | 1280 |
| SHE 505 | PE | 0 | 3 | 500 | 768 | 5 | 360 | 5 | 15-25 | 2015 | 2190 | 695 | 1385 | 1090 |
| SHE 505 | K (16 ton) | 0 | 3 | 500 | 862 | 5 | 360 | 5 | 15-25 | 2015 | 2190 | 935 | 1385 | 1330 |
| SHE 505 | E12 (GRI12) | 0 | 3 | 500 | 1061 | 5 | 360 | 5 | 15-25 | 2015 | 2190 | 980 | 1385 | 1375 |
| SHE 506 | PE | 0 | 3 | 500 | 930 | 5 | 360 | 6 | 15-25 | 2015 | 2190 | 695 | 1385 | 1090 |
| SHE 506 | K (16 ton) | 0 | 3 | 500 | 1054 | 5 | 360 | 6 | 15-25 | 2015 | 2190 | 935 | 1385 | 1330 |
| SHE 506 | E12 (GRI12) | 0 | 3 | 500 | 1180 | 5 | 360 | 6 | 15-25 | 2015 | 2190 | 980 | 1385 | 1375 |

Weight classes refer to standard teeth
I pesi si intendono con pala standard



This data are indicative. To choose the correct attachment check also excavator lifting capacities.
Il peso dell'escavatore è indicativo, per abbinare la giusta attrezzatura, è necessario consultare il diagramma delle portate dell'escavatore.

OPTIONS
ACCESSORI



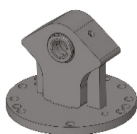
Check valve
Valvola di blocco semplice effetto



Excavator link (AG 120)
Staffa basculante per escavatore (AG 120)



Easy link for excavators (AG 121)
Easy link per escavatore (AG121)



Suspension plate male (AA 120)
Attacco maschio (AA 120)



Mechanical rotator (AD 120)
Rotatore meccanico (AD 120)



Cylinder protections
Protezione cilindro



10022 Carmagnola (To) Italy
Via Racconigi, 140
Tel. +39 011 9692684

info@gusella-bakker.com

6662 NG Elst (Gld) Netherlands
Nijverheidsweg 6
Tel. +31 (0)481-374757